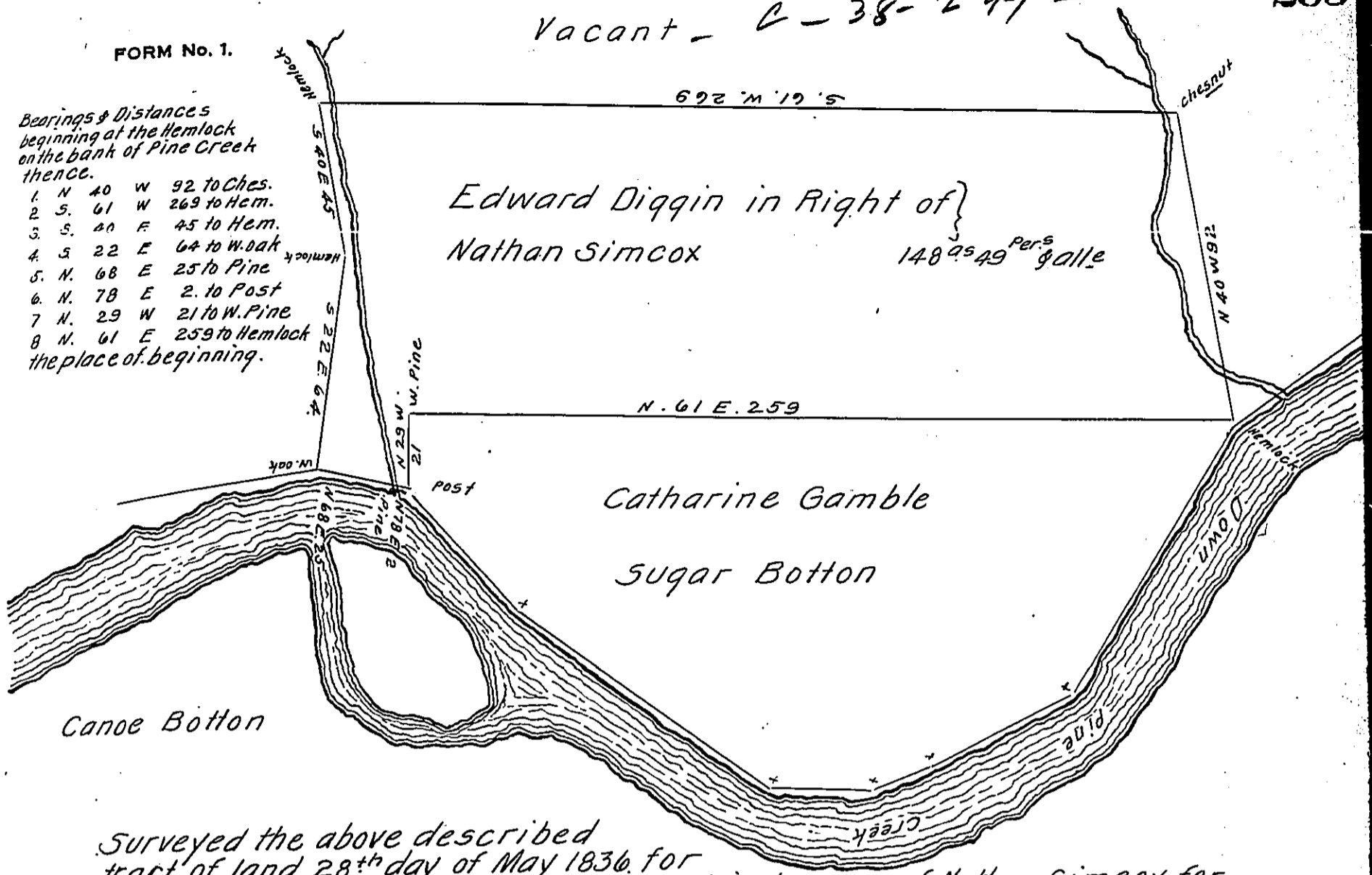


Vacant - C-38-299-

FORM No. 1.

- Bearings & Distances  
beginning at the Hemlock  
on the bank of Pine Creek  
thence.
1. N 40 W 92 to Ches.
  2. S 61 W 269 to Hem.
  3. S 40 E 45 to Hem.
  4. S 22 E 64 to W. Oak
  5. N 68 E 25 to Pine
  6. N 78 E 2 to Post
  7. N 29 W 21 to W. Pine
  8. N 61 E 259 to Hemlock  
the place of beginning.



Surveyed the above described tract of land 28<sup>th</sup> day of May 1836 for Edward Diggin by Virtue of a Warrant in the name of Nathan Simcox for fifty acres dated 23<sup>rd</sup> Feb. 1830. Situate in Brown Township Lycoming Co on the west side of Pine Creek & bounded as above described. Containing 148 acres & 49 perches with the allowance of Six per Cent. &c

David Hanna D.S.

N.B. Jacob Tomb in behalf of W<sup>m</sup> Herrod forbade making the Survey. He said Herrod had bought an improvement of Cornelius Ostrander on said land. Ostrander cleared about two acres on the lower run, lived on it a short time, had his cabbins burned, & as M<sup>r</sup> Tomb says sold his right to Herrod. There are about ten acres that have been cleared besides the two above mentioned, but they are both grown up with brush except about two & a half acres which are in Wheat.

To  
John Taylor Esquire  
Surveyor General.

By David Hanna D.S.  
Returned by  
Robert Hamilton D.S.

IN TESTIMONY that the above is a copy of the original remaining on file in the Department of Internal Affairs of Pennsylvania, made conformably to an Act of Assembly approved the 16th day of February, 1833, I have hereunto set my Hand and caused the Seal of said Department to be affixed at Harrisburg, this fifteenth day of February 1911.

*Nevins House*  
Secretary of Internal Affairs.